

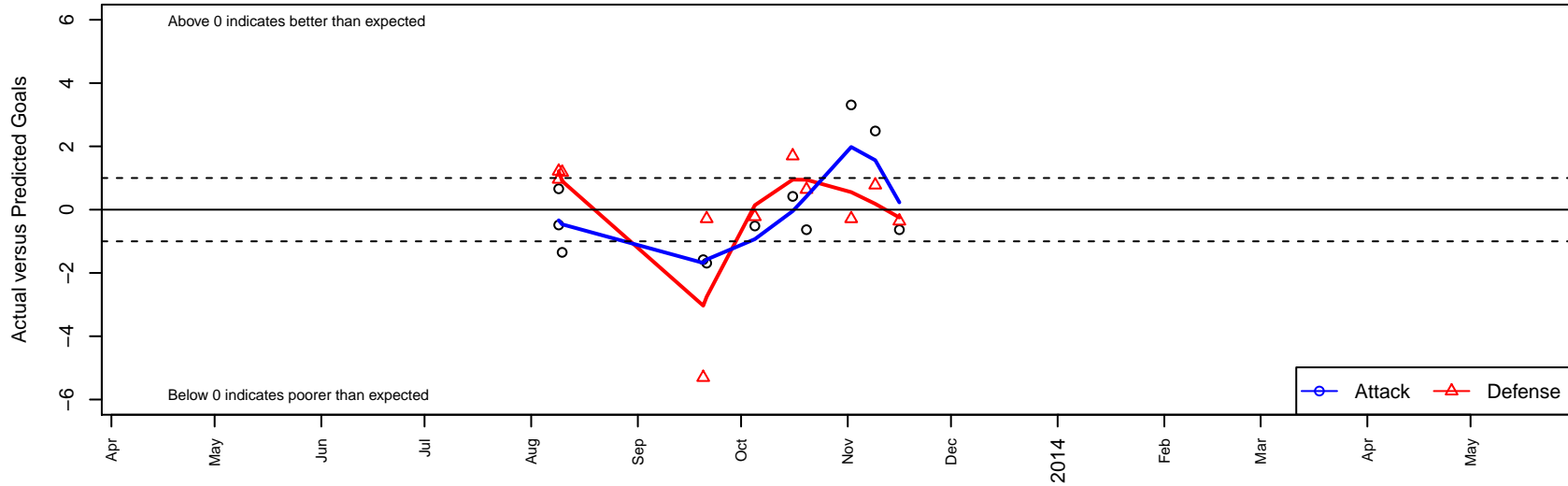
# Tahuichi Red B02

, CAN  
 B02 total strength=726  
 attack=1.62 defense=0.37  
 alt names used:  
 TAHUICHI F.C. TAHUICHI BOYS 02RED (CAN)  
 TAHUICHI F.C. Tahuichi Boys 02

Venues played:  
 Sporting Invitational Boys U11 U11  
 NorCal Premier F11 – Region 5 U11



**Tahuichi Red B02**  
 Dots are actual minus expected GF (blue circles) and GA (red triangles).  
 Blue line is smoothed change in attack strength. Red is smoothed change in defense strength.



	<b>date</b>	<b>home</b>		<b>away</b>		<b>venue</b>	<b>pred.home</b>	<b>pred.away</b>
18334	2013-11-16	Novato United B02	2	Tahuichi Red B02	4	NorCal Premier F11 – Region 5 U11	1.6	4.6
17567	2013-11-09	Tahuichi Red B02	6	Atletico Santa Rosa Cobras B02	1	NorCal Premier F11 – Region 5 U11	3.5	1.8
16558	2013-11-02	Mill Valley 03 Fusion B02	3	Tahuichi Red B02	7	NorCal Premier F11 – Region 5 U11	2.7	3.7
15231	2013-10-20	Tahuichi Red B02	4	Novato United B02	1	NorCal Premier F11 – Region 5 U11	4.6	1.6
14691	2013-10-16	Tahuichi Red B02	4	SRU Celtic B02	2	NorCal Premier F11 – Region 5 U11	3.6	3.7
12637	2013-10-05	Atletico Santa Rosa Cobras B02	2	Tahuichi Red B02	3	NorCal Premier F11 – Region 5 U11	1.8	3.5
10766	2013-09-21	Tahuichi Red B02	2	Mill Valley 03 Fusion B02	3	NorCal Premier F11 – Region 5 U11	3.7	2.7
10737	2013-09-20	SRU Celtic B02	9	Tahuichi Red B02	2	NorCal Premier F11 – Region 5 U11	3.7	3.6
6112	2013-08-10	Santa Rosa United Celtic B02	3	Tahuichi Red B02	0	Sporting Invitational Boys U11 U11	4.2	1.3
5873	2013-08-09	Santa Clara Sporting Green B02	2	Tahuichi Red B02	1	Sporting Invitational Boys U11 U11	3.2	1.5
5876	2013-08-09	Central Cal SA White B02	1	Tahuichi Red B02	3	Sporting Invitational Boys U11 U11	2.0	2.3